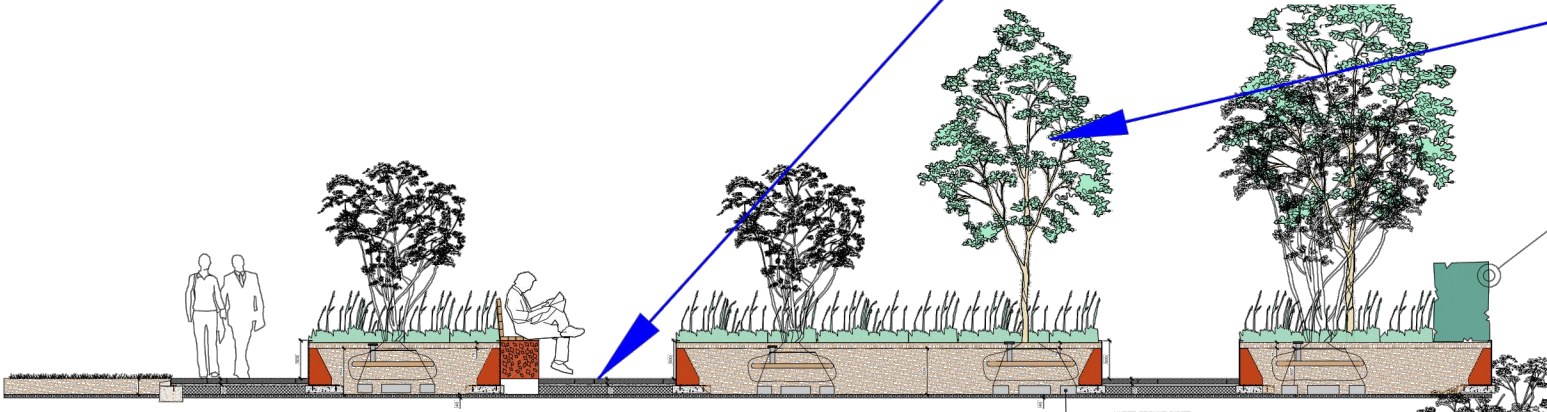
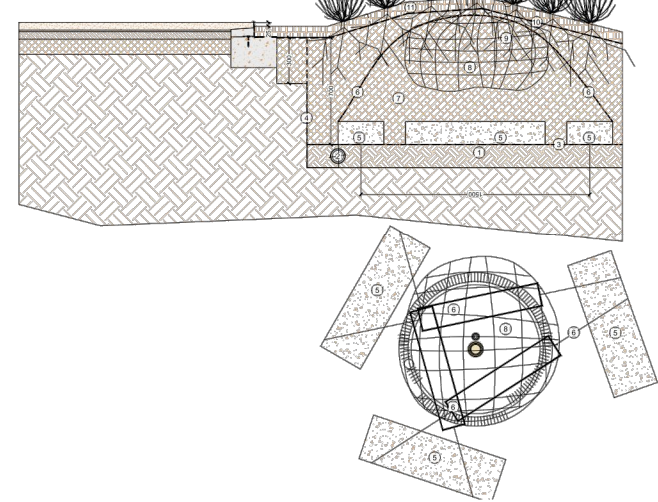
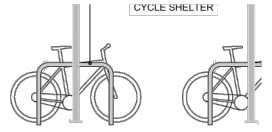


**UNDER-GROUND GUYED TREE DETAIL A**

- Q31515 150mm depth clean gravel or broken stone, with no fines, graded 40 to 20 mm.
- 100mmØ perforated plastic drainage pipe laid around perimeter of pit within aggregate layer, connected to soakaway or drainage system to engineer's design detail & specification.
- Q31515 Non-woven UV stable polypropylene fibre geotextile to be laid over aggregate before installing tree or backfill.
- Q31515 wherever the installed method will be within 3.0m of an existing underground service route and 2.0m of a building or paving foundation, install a tree pit root barrier, geotextile or cylinder type as appropriate. Top of root barrier to finish 75mm below finished soil level, installation with slope vertical.
- 3 no. pre-cast concrete 'dead-man' type kerbstones in base of planting pit to secure guying wires to.
- Underground guying with min. 3 no. mat straps, 6mmØ galvanised multi-strand guying wires and dead-man kerbs to BS 4043. Use galvanised rebar/wire to tension guying wires.
- Multi purpose grade topsoil to BS 3882 with ameliorants and compost.
- Tree planting prepare roots and transplant to BS 4433, wrap trunks and lower branches with hessian strips and leave on for at least two summers.
- Q31512 Min. 50mmØ perforated plastic riser/ventilation pipe with plastic cover cap in circle above and around rootball of tree.
- Q31585 Lay 90gsm² UV-resistant black permeable weed-guard type geotextile over topsoil layer and plant strata through it.
- Q31585 75mm depth medium grade bark mulch or mulch cover as specified.

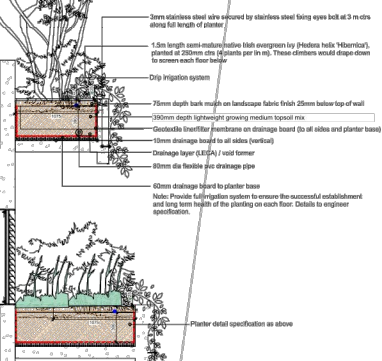
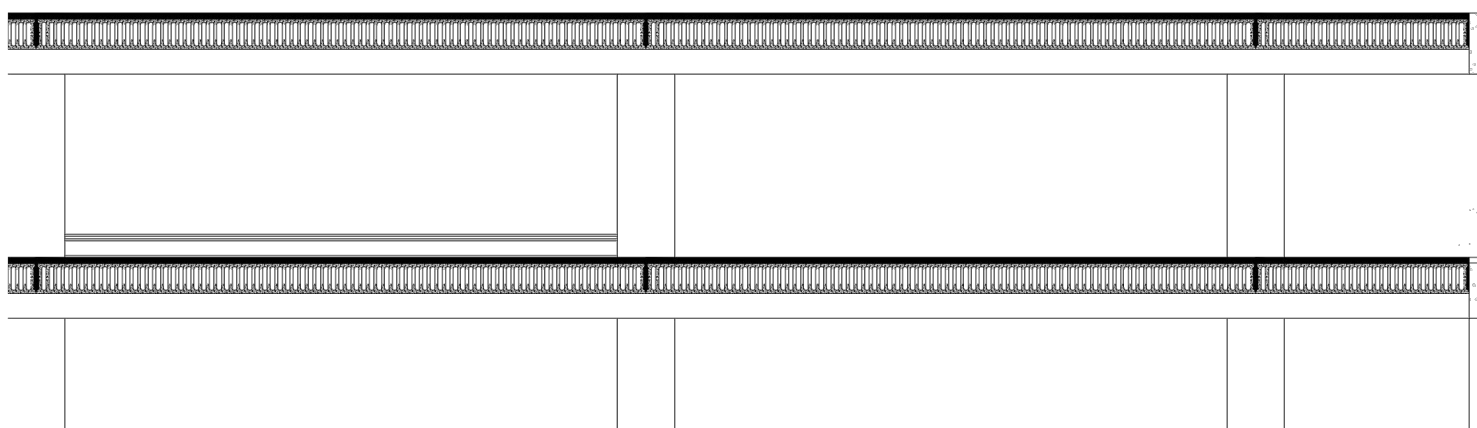


Prunus lusitana (Portugues laurel), evergreen hedgerow maintained to 1.5m height to screen overlooking to adjacent properties



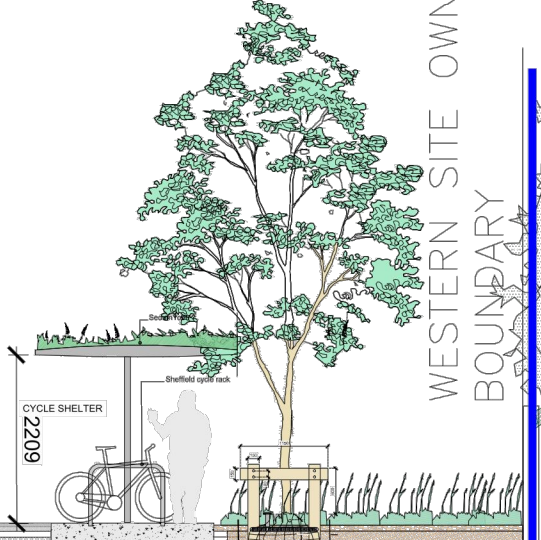
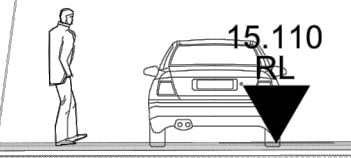
21.495  
WALL PARAPET

Prunus spinosa 2.5m height (multi-stemmed)

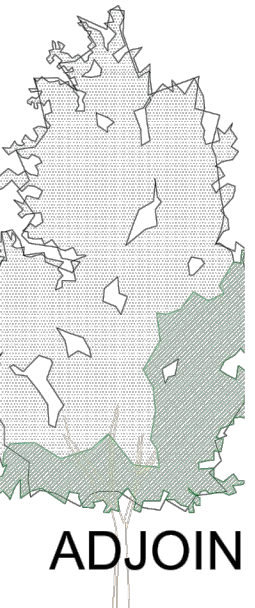


- 20mm stainless steel wire secured by stainless steel fixing eyes both at 3 m c/c along full length of planter
- 1.5m length steel reinforcement slab supported by plastic beds 100mmØ, placed at 250mm c/c 20 plants per 1m². These channels would slope down to remove excess floor water.
- Drip irrigation system
- 75mm depth bark mulch on landscape fabric 150mm below top of wall
- 100mm depth lightweight growing medium topsoil mix
- Granulite breasting foundation on drainage board (to all sides and planter base)
- 15mm drainage board to all sides and base
- Drainage layer (S.P.A.) / void former
- 80mm dia flexible PVC drainage pipe
- 60mm drainage board to planter base
- Note: Provide full height system to ensure the successful establishment and long term health of the planting on each floor. Details to engineer specifications.

Plaster detail specifications as above



WESTERN SITE OWNERSHIP  
BOUNDARY



**CONSTRUCTION SECTION CS-03 - THROUGH ABOVE PODIUM COURTYARD PLANTERS**  
/ Scale 1100

8238

6183

**STEPHEN DIAMOND ASSOCIATES**  
CHARTERED LANDSCAPE ARCHITECTS

68 Pearse Street Dublin 2 tel: 01 6775670  
email: mail@sdac.ie fax: 01 6775669  
Client - IMRF II Frascati Limited Partnership acting through its general partner Davy IMRF II GP Limited  
Project - Proposed Strategic Housing Development (Alterations to Phase 1 Residential and Proposed Phase 2 Residential Development)  
Title Construction Sections Scale 1:100 @ A3  
Drg No 19-524-PD-07 Date Issued 2020-08-24  
Drawn SD/LP Purpose Planning Checked SD